

# G13

Created by

Smartbox

Communication reimagined...



# Who is G13 for?

G13 is a powerful and fully featured speech generating device ready for use with eye tracking technology.

Designed for people with ALS, Cerebral Palsy, brain injury and other conditions that affect speech and mobility.



Touch



Switch



Pointer

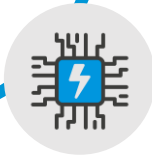


Eye gaze



# Feature focus

11<sup>th</sup> gen Intel processor,  
16GB RAM,  
256GB SSD



13.3"  
premium  
antiglare  
display



GEWA  
Infrared,  
optional  
EasyWave /  
Z-Wave radio



Drop tested  
to 1m and  
IP54 rated



Smart Eye or  
Alea NXT eye  
gaze  
technology



6.5" daylight  
bright  
Second  
Screen



Smart  
Buttons (eye  
gaze and  
touch  
accessible)



13 hours /  
8 hours (with  
eye gaze)



# Powerhouse performance

With four times more power than its predecessor, G13 delivers a huge leap forward in performance - ready for you now and for years to come.

Get the most out of all the features in Grid software alongside controlling devices around your home, using your Windows apps, listening to music and using eye gaze software packages like Look Lab .





“

My first impressions were extremely positive. It felt like a massive leap forward.

”

Lucinda Ritchie,  
G13 tester

# Go anywhere

Fully enclosed in an aluminum chassis and drop tested to 1 meter, G13 is built to withstand day to day life.

The reinforced and shock-proof design is ready for communication everywhere you go.

A fan free design makes G13 splash and dust resistant (IP54 rated).





# Premium 13" display

The antiglare screen is steel ball tested and daylight readable, making it super strong and easy to see in bright surroundings.

Made from toughened industrial-grade glass and optically bonded for improved visibility.





“

The screen is impressive, and I really enjoy using it outside. You can see the whole screen and the camera picks up the glint in my eyes just as good outside as it does inside. It's truly fantastic!

”

Howard Wicks  
G13 tester

## Built to last

IP54 rated

Drop tested to  
1m

Super  
strong ports

Aluminum  
chassis

Class 1  
medical  
device



“

The device's design, it is sleek and cool, earning a perfect 5/5 for its appearance!

”

Howard Wicks  
G13 tester

# Standout second screen

G13 has a 6.5 inch second screen that displays your message on the back of your device, perfect for supporting conversation and expressing yourself with Symoji!

- 50% bigger than previous generation Grid Pad
- Ultra-wide viewing angle
- Daylight bright screen for clear visibility outdoors



# Custom audio

Custom designed high displacement speakers add richness and clarity to your voice – so you can be heard in all environments.

Powerful bass and dedicated speaker chambers ensure the quality of your voice reproduction is loud and clear.



# Personal speakers

Alongside high-quality speakers for voice reproduction, G13 includes two mini personal speakers that point towards you.

Providing the option for discrete audio feedback without the need for a headset – great for anyone who uses switch scanning in Grid.

As you scan through your grid set, audio feedback tells you which cell you have highlighted before selecting it.



# Programmable Smart Buttons

Activate user accessible Smart Buttons to do even more with your device.

Use them to quickly navigate your device, calibrate your eye gaze camera, activate a rest cell or choose their function by programming a command of your choice.







“

Loving the smart buttons, so quick to get anywhere and love that you can programme their function.

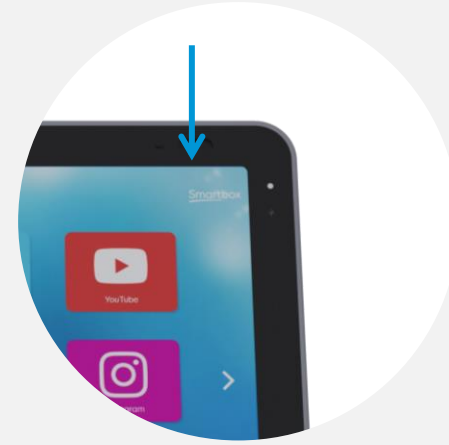
”

Esther Camp,  
G13 tester

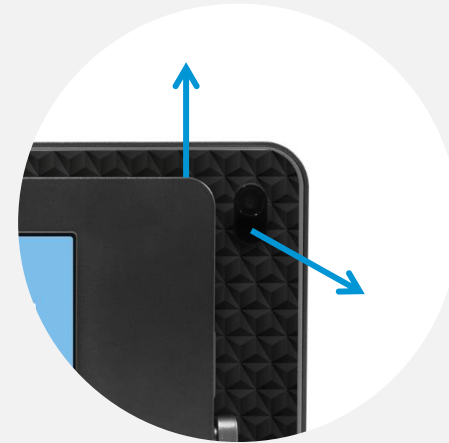
# Control your home

Program your IR devices with ease and enjoy reliable control of your home devices.

There is also the option to add on EasyWave / Z-Wave radio Environment Control.



IR learning



IR emitters

# Remote Power Button



Add 2 extra switches

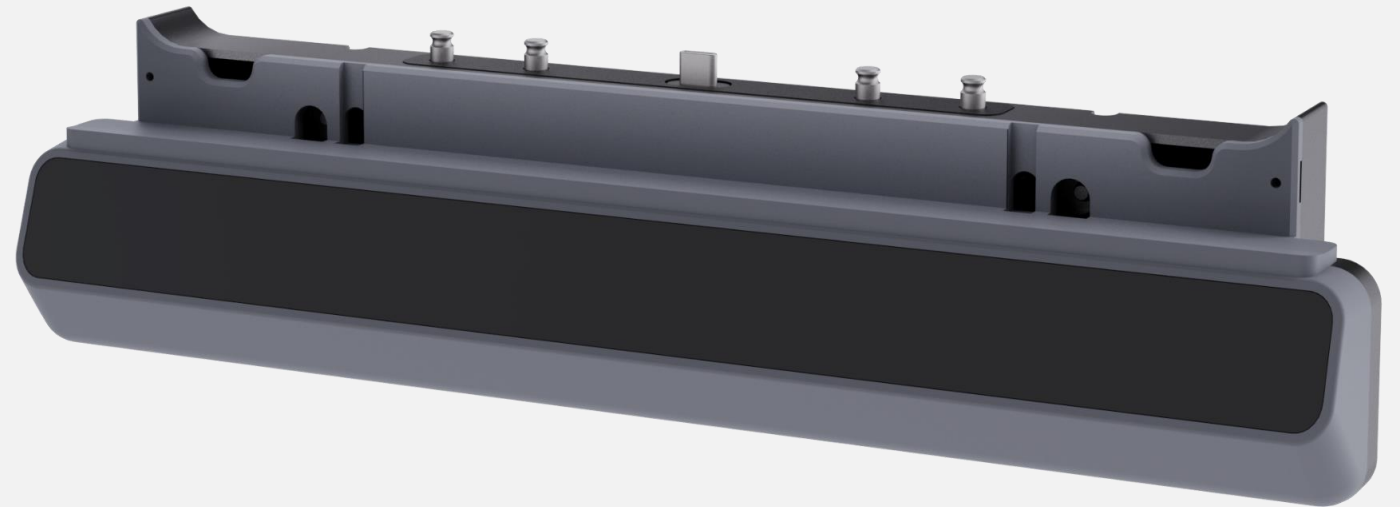
Press to turn on your device

Hold for 5 seconds to reset your device

# Modular eye gaze

An impact resistant and IP rated eye gaze module transforms your device into a dedicated eye gaze device.

Wireless docking makes getting setup even easier, with no need for any cables. Available with Smart Eye and Alea NXT eye tracking technology.



# HeadMouse Nano dock

There's also the option to dock a HeadMouse Nano.



## LED indicators

Handy LED indicators positioned next to your switch ports light up when you activate a switch – so you know that everything is connected.



A light up power symbol on the front of your device blinks when your battery is charging, glows green when fully charged and orange when your battery is running low.



## Security features

The front camera on G13 can be used with Windows Hello, a biometric authentication feature which provides a secure and password-free way of unlocking your device.



We've also added a Kensington lock slot for use with Kensington nano locks for an extra layer of security. Ideal for shared settings like schools and hospitals.



# Even more ports



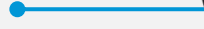
Switch 1



Switch 2



USB-A 3.1



Headphone / Headset

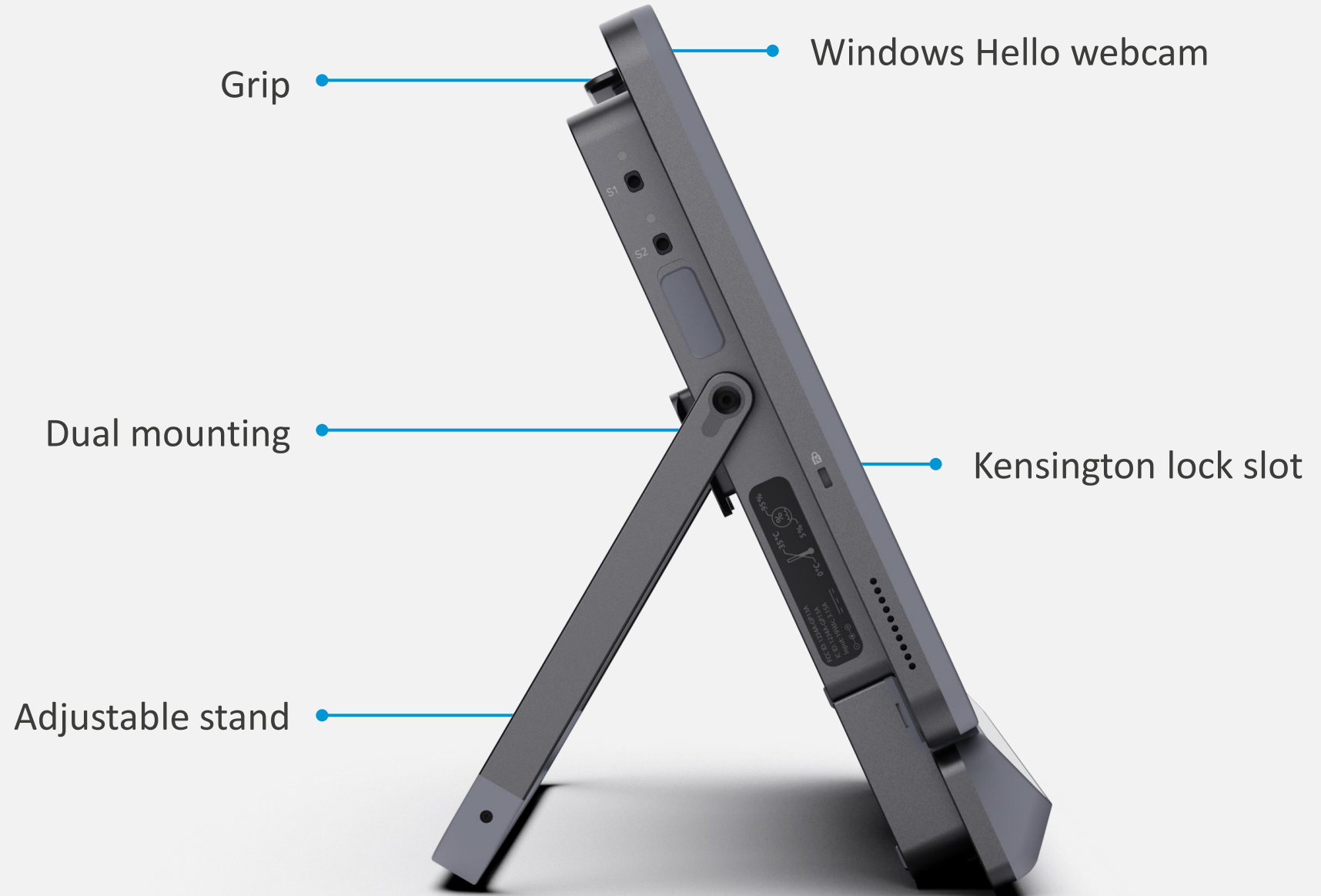
USB-C 4.0

USB-A 3.1

DC Jack



# Extra little details





Grid AAC software includes a library of ready-made resources that you can choose from. With content for literate users who need fast word prediction and pre-stored phrases, to symbol users who need robust vocabularies and learning resources.

# We're here to help

G13 includes free access to our team of support specialists for added peace of mind.

Smartbox Support team



Digital guides and resources

