

The versatile, functional and powerful WinSlate 12D™

- 7th Generation Intel® Core™ processor
- Incredibly travel friendly, weighing only 2.36 pounds
- High-definition 12.3" PixelSense™ 2736 x 1824 display
- Wearable SoundPOD™ speaker for natural communication
- Quality voice generation by Acapela Group
- FlexABLE® Handle and Stand included ✨
- Fast communication rate powered by Grid 3



Portable size with big AAC power

The WinSlate 12D's 12.3" PixelSense display is perfect for communicators who use alternative access methods or need **larger** on-screen targets. Access methods include direct access with or without custom keyguards, optical/gyroscopic headmouse, and switch scanning. Weighing only 2.36 pounds, the WinSlate 12D is incredibly lightweight and portable and easy to use in all environments.

The WinSlate Dashboard™ and CoreWord™ language systems support communication at all levels, from expression of basic wants and needs to the use of powerful text-to-speech engines. Forbes AAC's patented FlexABLE Handle and Stand, SoundPOD wearable speaker and TRU-Hold™ Keyguards make it easier than ever for WinSlate 12D users to communicate anytime, anywhere.

Seamless Windows Integration

With the purchase of a Feature Unlock Key (sold separately) WinSlate users can quickly switch between talking, browsing the internet, or using other apps like Skype, Netflix, Pandora and more.

Wearable SoundPOD™ Speaker Module ✨

Now your voice output can come directly from you, not your device. Unlike traditional AAC speaker design, our SoundPOD can be concealed under clothing to create a more natural speaking experience, or it can be magnetically docked to the back of the device.



Compatible with Environmental Controls

With the purchase our Environmental Control hardware (sold separately) WinSlate users can control their television and household lighting, open doors with our power door openers, and more.

✨ Patent Pending

Forbes AAC

49 Illinois Ave. South
Mansfield, OH 44905

phone 1.888.884.2190

fax 1.877.884.9383



forbesaac.com

Fast communication using text-to-speech pages

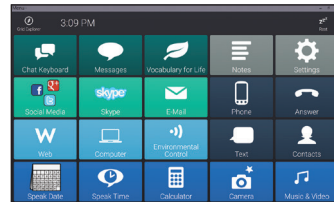
Each WinSlate device is pre-loaded with a range of page designs that allow for the fastest possible communication rate.

Vocabulary for Life



This grid set was designed to enable independence throughout all daily activities. Its robust, symbolized pages provide access to category - and topic - based language geared toward adult users.

Fast Talker



Keyboards feature word prediction, phrase prediction and word auto-completion for fast and efficient communication.

CoreWord



The CoreWord Language System provides AAC users with a powerful combination of core language, fringe vocabulary and banks of key phrases. The language system is divided into three distinct levels that correspond with vocabulary layouts: CoreWord 6, 20 and 40.

Interactive Learning



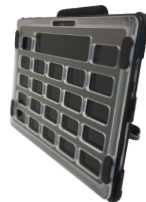
These exciting, animated activities are designed to teach skills including cause-and-effect, choice making, and problem solving. Using these grid sets, users can independently create their own songs, take care of Dilbert the animated dog, paint pictures and more!

Alternative Access Methods

WinSlate devices allow for a broad range of communication modalities including voice output, text messaging and more.

TRU-Hold™ Keyguards

Our keyguards provide a strong attachment directly to the face of a WinSlate 12 with their unique magnetic interlocking design. Purpose-built, the quarter inch thick guards prevent unwanted selections and come in a variety of layouts for virtually any grid set.



Gyroscopic Head Mouse

The head mouse set up provides accurate and intuitive computer access with just small head movements! It is flexible, light and comfortable for hours of accurate use.

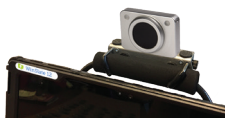
Easy Switch

Made for persons with moderate to severe upper extremity and motor disabilities. This switch features a 2.5 in. target area.



IR Head Mouse

This head mouse provides precise and efficient head-controlled access to computers, tablets, smartphones and speech generating devices for people who have limited or no use of their hands.



The WinSlate 12 also comes with an optional eye tracking module, this configuration is the WinSlate 12D with Enable Eyes™



WinSlate 12D Specifications

Hardware

CPU 7th Gen Intel Core m3

RAM 4 GB

Storage 128GB SSD

*** Operating System** Windows

Display 12.3 inch PixelSense

Display Resolution 2736 x 1824 (267 PPI)

Network Interface 802.11ac Wi-Fi wireless

***Bluetooth** 4.1 wireless

Microphone Stereo microphones

Speaker SoundPOD™ Wearable Voice Output Module

***I/O Ports** Headphone-out, mini display port

Water Resistance N/A

***Front Camera** 5.0MP 1080p HD video

***Rear Camera** 8.0MP autofocus 1080p HD video

Battery Up to 13.5 hours of local video playback

Weight 2.36 pounds

*Indicates restricted access unless Feature Access Key is purchased

Software

Grid 3

Main Body Dimensions

12.09" x 8.29" x .63" (L x H x D)

Forbes AAC

49 Illinois Ave. South
Mansfield, OH 44905

phone 1.888.884.2190

fax 1.877.884.9383

